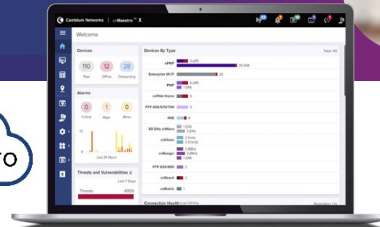


XV2-2X Wi-Fi 6 Access Point

802.11ax Dual-Radio 2x2 Access Point

XV2-2X Quick Look:

- Dual-radio, 2x2
- 2.5 GbE uplink port, RJ45
- 1.77 Gbps aggregate data rate
- Application policy control
- EasyPass with Microsoft Azure and Google G Suite integration



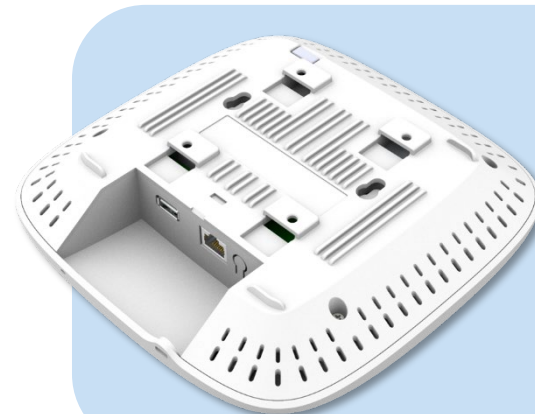
Wi-Fi 6 Designed for Mobile Devices and IoT

The XV2-2X is a dual-radio Wi-Fi 6 access point (AP) designed to deliver next-generation networks with edge services at a value-based price. Wi-Fi 6 technology delivers higher network speeds and enables more connected devices at higher packet quality. Wi-Fi 6 brings a deterministic model to the radio frequency (RF) layer where the AP controls the client connections, including when to sleep, when to wake, and how to transmit and receive packets. The XV2-2X is fully backward compatible with existing Wi-Fi technology and enables a massive growth of low power, low-bitrate IoT devices to add infrastructure intelligence into any market.

The XV2-2X comes with the Cambium Networks' Limited Lifetime Warranty, providing return and repair service on the AP from date of purchase until product end of life.

Cloud and On-Premises Management

XV2-2X is advancing enterprise network convergence by integrating edge-intelligent access points, all managed seamlessly through the versatile cnMaestro™ Network Management System, which is accessible both through cloud-based and on-premises solutions. To cater to the increasing need for advanced management and service capabilities, Cambium provides cnMaestro X with a paid subscription on top of the free cnMaestro Essentials, which includes a comprehensive set of functionalities.



XV2-2X
back panel

XV2-2X Wi-Fi 6 Access Point

Network Specifications

Radios	5 GHz 802.11 a/n/ac/ax, 2x2 2.4 GHz 802.11 b/g/n/ax, 2x2	Power	Max power 21W, 802.3at powered device 15.4W (802.3af) operation with reduced function settings Typical 11W (USB disabled)
Wi-Fi	802.11 a/b/g/n/ac/ax	Dimensions	195 mm x 195 mm x 41.4 mm (7.67 in x 7.67 in x 1.63 in)
SSID Security	WPA3-SAE, WPA3-Enterprise, WPA2-PSK (CCMP, AES, 802.11i), WPA2-Enterprise (802.1X/EAP), OSEN, OWE, Open	Weight	800 g (1.76 lb)
Max PHY Rate	5 GHz 1,201 Mbps 2.4 GHz 573.5Mbps	Security	Kensington lock slot
Ports	1 x IEEE 10/100/1000/2500 Mbps Ethernet 1 x USB 2.0	Mount Options	Wall or ceiling, T-bar with included locking bracket, ceiling tile plate
Antenna Gain	5 GHz 6 dBi, omni 2.4 GHz 5 dBi, omni	Ambient Operation Temperature	0°C to 50°C (32°F to 122°F)
Max EIRP*	5 GHz 31 dBm 2.4 GHz 29 dBm	Storage Temperature	-40°C to 70°C (-40°F to 158°F)
FCC	Ch 1–11, 36–48, 52–64, 100–144, 149–165	Humidity	95% RH non-condensing
ISED	Ch 1–11, 36–48, 52–64, 100–116, 149–165	MTBF	4,514,013 hours at 25°C ambient 1,314,841 hours at 50°C ambient
ETSI	Ch 1–13, 36–48, 52–64, 100–140	LEDs	Multi-color status LEDs, dimmable, on/off
ROW*	Ch 1–14, 36–48, 52–64, 100–144, 149–173	Certifications (compliance)	Wi-Fi Alliance 802.11 a/b/g/n/ac/ax, FCC, IC, CE, EN 60950-1, IEC 62368-1 Safety, EN 60601-1-2 Medical, EN 61000-4- 2/3/5 Immunity, EN 50121-1 Railway EMC, EN 50121-4 Railway Immunity, IEC 61373 Railway Shock & Vibration, UL 2043 Plenum, EN 62311 Human Safety/RF Exposure, WEEE & RoHS

*Individual country limits may apply.

Standards

Wi-Fi Protocols	VHT MCS rates, 16/64/256/1024-QAM, channel width support in 5 GHz: 20/40/80 MHz TWT, Long OFDM Symbol, Transmit beamforming, Airtime Fairness, AMSDU, AMPDU, RIFS, STBC, LDPC, MIMO Power Save, MRC, BPSK, QPSK, CCK, DSSS, OFDM, OFDMA, UL/DL MU-MIMO IEEE 802.11 a/ac/ax/b/d/e/g/h/i/k/n/r/u/v/w
------------------------	---

XV2-2X Wi-Fi 6 Access Point

Management



cnMaestro uses a distributed intelligence architecture with cloud-first management and edge-intelligent APs that self-optimize for the RF environment. cnMaestro delivers a single pane-of-glass management for Cambium broadband fixed wireless, cnMatrix Ethernet Switches, enterprise-grade Wi-Fi APs, NSE Service Edge, and residential service provider routers.

cnMaestro can be deployed on cloud or on-premises via a virtual machine.

To serve a growing market for advanced management and services functionality, Cambium Networks offers cnMaestro in two management tiers:

cnMaestro X

Paid subscription that includes:

- Advanced device management capabilities
- Deep packet inspection (DPI) application visibility and Control for 2,400+ apps
- RESTful management and statistics API
- Presence location push APIs
- Graphic reports
- Webhooks
- Cambium Care Pro for 24x7 technical support
- Accelerated access to L2 engineers and regular software updates

Assists

- Assesses the network's configuration and identifies weak security settings and proposes a fix to ensure the network configuration is up to the top security industry standards

cnMaestro Essentials

License-free cloud management that delivers a disruptive total cost of ownership (TCO) for organizations of all sizes. Includes EasyPass for OneClick or voucher-based connection as well as WiFi4EU access.

X Assurance

- Helps to quickly identify network-wide connectivity issues by isolating every element of the client's lifecycle, either radio or network related
- Gives an overview quality index of the network and highlights each element's contribution to easily identify the worst offender
- Provides insight of probable causes and proposes fixes for the administrator to apply
- Provides individual client connectivity visibility throughout the entire lifecycle of its connection to easily identify each connection's result and highlight the failure reason, should there be any

EasyPass Portal with Additional Options

- Self-registration: Form-based access
- Sponsored guest: Guest ambassador-based access
- Paid access: Monetize the Wi-Fi access
- Microsoft Azure: Corporate user login
- Google Login: Web login using Google accounts

**Find out more about
cnMaestro**

XV2-2X Wi-Fi 6 Access Point



Front



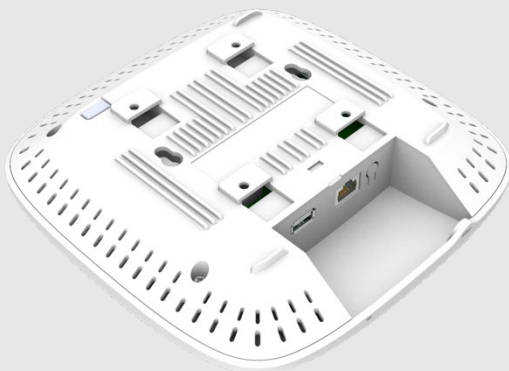
Top View



Left Corner



Right Side

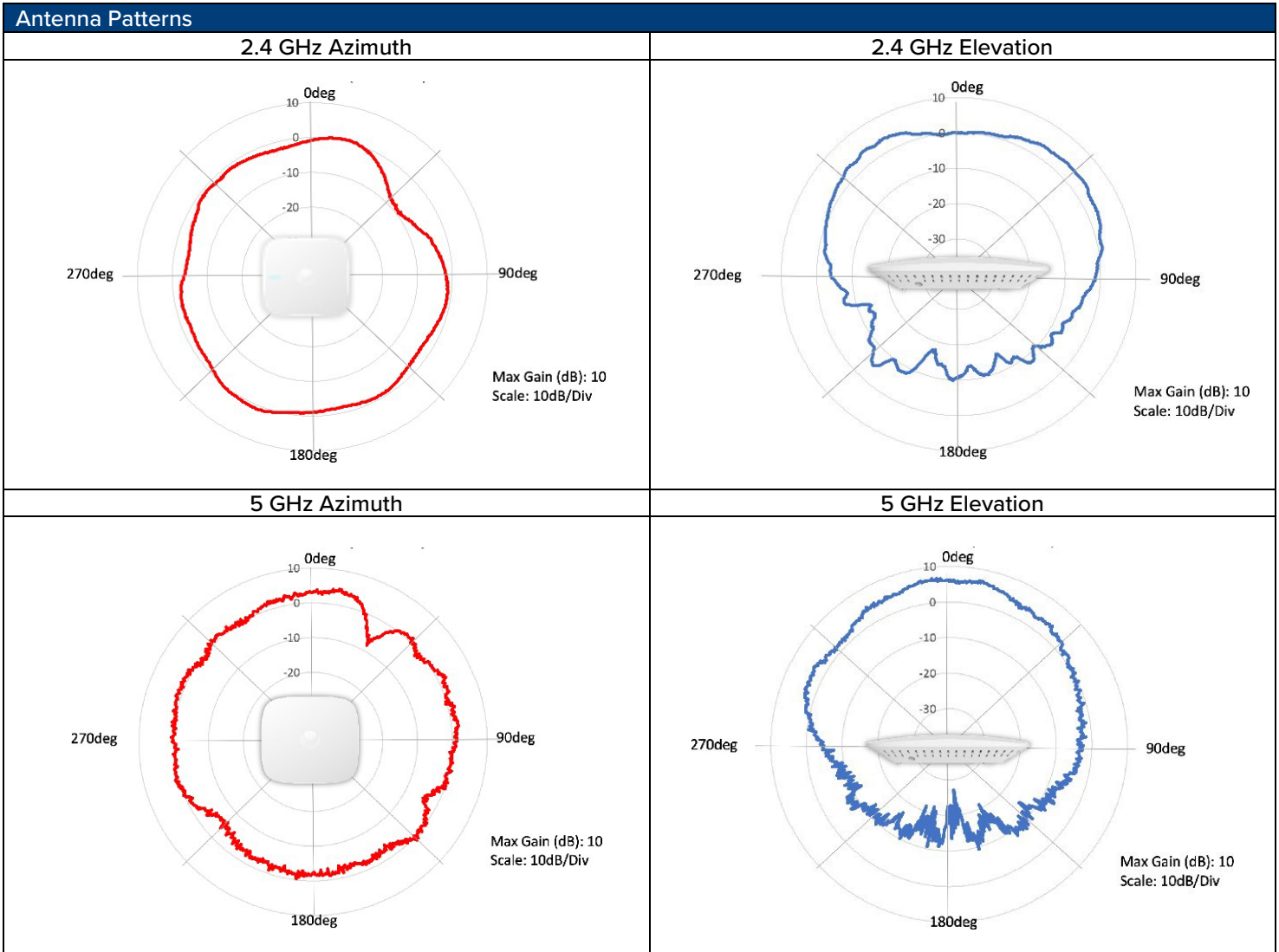


Oblique Back Panel



Back Panel

XV2-2X Wi-Fi 6 Access Point



XV2-2X Wi-Fi 6 Access Point

XV2-2X Ordering Information

Regulatory Model	XV2-2X
XV2-2X00A00-US	XV2-2X Dual-Radio Wi-Fi 6. Indoor (FCC) SDR 802.11ax 2x2, US
XV2-2X00A00-CA	XV2-2X Dual-Radio Wi-Fi 6. Indoor (IC) 802.11ax 2x2, CA
XV2-2X00A00-EU	XV2-2X Dual-Radio Wi-Fi 6. Indoor (ETSI) 802.11ax 2x2, EU
XV2-2X00A00-RW	XV2-2X Dual-Radio Wi-Fi 6. Indoor 802.11ax 2x2, RW
AX-E510RBKT-WW	Shock mount bracket
AX-WALLBRKT-WW	Wall Mount L-Bracket for XV and XE series APs. Use to mount the AP horizontally.
C000000L141A	PoE, 60W, 56V, 10GbE DC Injector, Indoor, Energy Level 6 Supply, accepts C5 connector
N000000L034B	PoE injector, 30.5W, 56V, 5GbE DC Injector, Indoor, Energy Level 6 Supply, accepts C5 connector
N000900L031A	AC line cord, US Type B, 720 mm, C5 connector
N000900L032A	AC line cord, EU Type F angled, 720 mm, C5 connector
N000900L033A	AC line cord, UK Type G angled, 720 mm, C5 connector
N000900L034A	AC line cord, BR Type N, 720 mm, C5 connector
N000900L011A	AC line cord, AU Type I, 720 mm, C5 connector
N000900L012A	AC line cord, IN Type D angled, 720 mm, C5 connector
N000900L013A	AC line cord, AR Type I, 720 mm, C5 connector
N000900L015A	AC line cord, CN Type I, 720 mm, C5 connector
N000900L048A	AC line cord, ZA Type M angled, 720 mm, C5 connector

cnMaestro X Subscriptions

MSX-SUB-XV2-2-1	cnMaestro X for one XV2-2X AP. Creates one Device Tier3 slot. Includes Cambium Care Pro Support. 1 year subscription.
MSX-SUB-XV2-2-3	cnMaestro X for one XV2-2X AP. Creates one Device Tier3 slot. Includes Cambium Care Pro Support. 3 year subscription.
MSX-SUB-XV2-2-5	cnMaestro X for one XV2-2X AP. Creates one Device Tier3 slot. Includes Cambium Care Pro Support. 5 year subscription.

Cambium Care Support

CCADV-SUP-XV2-2-1	Cambium Care Advanced, 1-year support for one XV2-2X Wi-Fi 6 AP. 24x7 TAC support, SW updates, and NBD advance replacement for HW
CCADV-SUP-XV2-2-3	Cambium Care Advanced, 3-year support for one XV2-2X Wi-Fi 6 AP. 24x7 TAC support, SW updates, and NBD advance replacement for HW
CCADV-SUP-XV2-2-5	Cambium Care Advanced, 5-year support for one XV2-2X Wi-Fi 6 AP. 24x7 TAC support, SW updates, and NBD advance replacement for HW
CCADV-UPG-XV2-2-1	Cambium Care Advanced Add-on to cnMaestro X, 1-year support for one XV2-2. 24x7 TAC support, SW updates, and NBDS advance replacement for HW
CCADV-UPG-XV2-2-3	Cambium Care Advanced Add-on to cnMaestro X, 3-year support for one XV2-2. 24x7 TAC support, SW updates, and NBDS advance replacement for HW
CCADV-UPG-XV2-2-5	Cambium Care Advanced Add-on to cnMaestro X, 5-year support for one XV2-2. 24x7 TAC support, SW updates, and NBDS advance replacement for HW
CCPRO-SUP-XV2-2-1	Cambium Care Pro, 1-year support for one XV2-2X Wi-Fi 6 AP. 24x7 TAC support and SW updates
CCPRO-SUP-XV2-2-3	Cambium Care Pro, 3-year support for one XV2-2X Wi-Fi 6 AP. 24x7 TAC support and SW updates
CCPRO-SUP-XV2-2-5	Cambium Care Pro, 5-year support for one XV2-2X Wi-Fi 6 AP. 24x7 TAC support and SW updates

XV2-2X Wi-Fi 6 Access Point

LIMITED WARRANTY

Cambium Networks XV2-2X Wi-Fi 6 Access Point includes a limited lifetime hardware warranty that extends 5 years after end of sale.

ABOUT CAMBIUM NETWORKS

Cambium Networks enables service providers, enterprises, industrial organizations, and governments to deliver exceptional digital experiences and device connectivity with compelling economics. Our ONE Network platform simplifies management of Cambium Networks' wired and wireless broadband and network edge technologies. Our customers can focus more resources on managing their business rather than the network. We make connectivity that just works.

cambiumnetworks.com

10012024